

Presented by **TANA Workshop**

Instagram : [TANA\\_Workshop](#)

+852 67112458

[tanaworkshophk@gmail.com](mailto:tanaworkshophk@gmail.com)

# "Human · Nature II" : Symbiosis

## - 10 Years Retrospective of Meevi's Art

Date : 2024/8/8 - 8/28

( Closes on Mondays )

Time : 1-7pm

Venue : ACO Art Space, 6/F, Foo Tak Building,

365 Hennessy Road, Wan Chai, Hong Kong

Venue Sponsor : ACO



TANA Workshop will present a wide variety of original, contemporary artworks of Meevi. Highlights include a 1.7-meter painting titled **Freedom** depicting a woman stands in front of a waterfall, most recent works **The Call of Life No. 1 and 2**, two reinterpretation Paintings of Leonardo DaVinci **Mona Lisa**, as well as more than twenty oil, acrylic, watercolor and pastel artworks, with subjects focused on figures, nature, and abstract, ranging from traditional sketch to painting and illustration.

*"A simple shift in our thoughts and intentions can profoundly impact the trajectory of our world. I deliberately blend the concepts of realism and abstract space, allowing audiences to weave between reality and fantasy"* - Meevi expressed her motivations and direction for her creative work. Through her latest painting about "SYMBIOSIS", Meevi depicts the harmonious coexistence of humans and nature in works such as **Harmony** and **The Call of Life No. 1 and 2**. Her use of poetic colors, illusion spaces, aims to highlight humanity's innate longing for balance in the natural world. Her intent is to seek the empathy that arises from the interweaving of reason and emotion. Besides the new series, she also presents some expressive abstract figurative artworks. The imperfect images in her abstract artworks aim to embody the state of our entire unpredictable world, the substantial scale artwork **Freedom** & the pink **Melody of Fragmented Psyche** will also be the powerful and impactful paintings that are sure to captivate viewers.

Two artworks of reinterpreting the **Mona Lisa** have also been selected in this retrospective. She painted with mixed media and overlapping techniques for a pure replication, precisely rendering the Mona Lisa as a homage to da Vinci. On the other, she used thick layering and a unique technique to create a distressed effect with the underlying flesh tones showing through. This lends a mysterious, worn metaphorically hinting at deeper emotions or objects yet undiscovered. Meevi invites viewers to immerse themselves in the timeless story of the **Mona Lisa** artwork.

Coincidentally, this is a retrospective journey, she painted in her latest work **Life and Death** an "old window frame" with a crystal shard relief, allowing visitors to transcend time and space, highlighting her artistic evolution over the past decade. *As Meevi states, "My life has shaped my artworks, and in turn, these artworks have molded the essence of my artistic odyssey"*. She invites you to come discover the symbiosis between her life and art.

### ABOUT THE ARTIST

Meevi Choi (蔡幸凌), HongKonger, is one of the founders of TANA Workshop. She works as a freelancer in painting, graphic design and teaching art classes. *"To embrace nature. To weave between reality & fantasy. To find ourselves from the chaos."* is the central concept behind Meevi's creative endeavors. She is passionate about painting. Through experimenting with a wide range of painting techniques and studying various materials, she seeks to find the most expressive way to interpret the personal feelings.

In recent years, Meevi has participated both in exhibitions at Yrellag Gallery in Central and Sinag Art Space on Lamma Island, including three artist exhibition "Salon of TANA", the group exhibition "Bodyscape" featuring figurative works and the duo exhibition "Ripple Exhibition." From 2021 to 2022, she taught art classes at Sinag Art Space and co-organize a number of festivals art activities.

In 2018, she held her first solo exhibition, "HUMAN . NATURE" showcasing the *Nature* series, and released her debut art album. From 2013 to 2015, she participated in various group exhibitions at venues such as the Hong Kong Visual Arts Centre through the Barbarian Workshop and taught painting classes and figure drawing there.



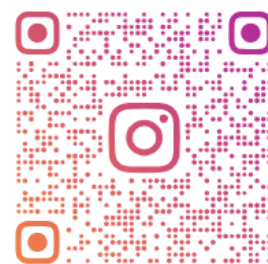
**Meevi Choi**

Instagram: [MeeviArt](#)

Facebook: [meevi.choi](#)

+852 61044104

[meevichoi@gmail.com](mailto:meevichoi@gmail.com)



**MEEVIART**

## ARTWORK DESCRIPTION 1-4



### **The Call of Life, No.1, Embracing the Radiance.**

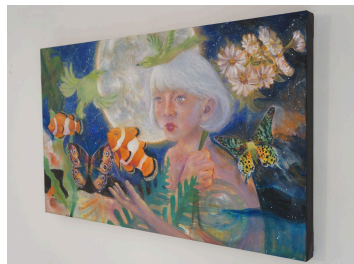
76 x 46 x 4 cm (Approx. 30 x 18 x 1.5 in)

Acrylic on Canvas

2024

Meevi Choi

This painting invites the viewer into a shimmering, dreamlike world. Against a backdrop of ethereal waves, the boundaries between reality and imagination blur, as schools of fish gracefully dance around the figures, their scales glimmering in hues of gold. Delicate butterflies, their wings like translucent wool scarf, effortlessly glide through the air, adorning the enchanted landscape. The serene expressions of the women convey a sense of being unencumbered by the constraints of the material world, as they forge a profound connection with the realm beyond.



### **The Call of Life, No.1, Subtle Beauty.**

76 x 46 cm (Approx. 30 x 18 x 1.5 in)

Acrylic on Canvas

2024

Meevi Choi

In this piece, Meevi captures a fleeting, yet profound, moment of connection with the natural world. Against a backdrop of lush, verdant foliage, the women stand in quiet contemplation, her faces reflecting a sense of wonder and reverence. Amidst the scene, a captivating dance unfolds - a pair of brightly colored clownfishes dart to and fro, while delicate moths grace the surface of the water with their intricate wing patterns. The women's relaxed and open postures embody a feeling of being fully present, attuned to the subtle beauty that surrounds them. They appear to have found a harmonious balance between their inner selves and the rhythms of the natural world.

**"The Call of Life" No.1 & 2 - A Pair of Paintings Exploring the Fantastical Realm Between Nature and the Human Experience.** Together, these two paintings weave a tapestry of dreams and reality, inviting the viewer to step into a world where the fantastical and the everyday coexist, where the call of life resonates with the depths of the human experience.



### **Life and Death**

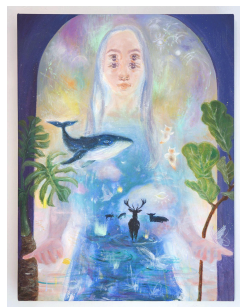
50 x 60 x 2.5 cm (Approx. 19.5 x 23.5 x 1 in)

Acrylic on Canvas

2024

Meevi Choi

Meevi truly appreciates the vintage aesthetic. On this occasion, she painted an aged window frame with crystal shards embossing upon her artwork. Through this window, you can see a woman within the work, wearing a mask made from a deer skull, with symbolic representations of gracefulness, acuity, and peace, evokes a profound sense of awareness and a serene nature, her eyes half-lidded, inhaling and sensing the warmth of the ground. In this verdant scene, daisies are dancing, seeds are drifting in the wind... She appears to have found inner peace and harmony. To what further impressions does this piece of artwork give rise in one's mind?



### **Harmony**

76 x 46 cm (Approx. 30 x 18 in )

Acrylic on Canvas

2024

Meevi Choi

Meevi depicts a woman in this work, hoping to draw the viewer's attention starting from the illusory double eyes on her face. From there, the viewer is invited to enter into the semi-circular arched window, reminiscent of Moroccan architecture, which frames a fantastical space filled with mist-like clouds. Within this dreamlike scene, a herd of deer are peacefully resting, while a whale appears to be soaring through the air, and a sea angel (also known as a sea butterfly) dances on the other side. In this painting, Meevi depicts her adventures in nature, where her observance of the wondrous plants and animals highlighting humanity's innate longing for harmony with the natural world. Through the use of poetic colors, illusion spaces and details that Meevi portrayed, she aims to seek the empathy that arises from the interweaving of reason and emotion.

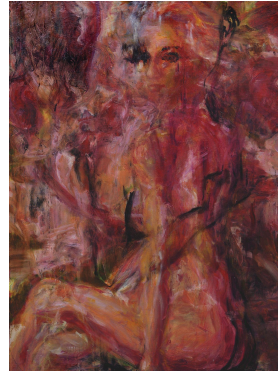
## ARTWORK DESCRIPTION 5-8



### Freedom

67 x 52 in  
Acrylic on Canvas  
2014  
Meevi Choi

**W**hen creating figurative works, I strive to capture the vivacious lines of the human form. Even from behind, as depicted in the model in this painting, I intentionally render the lower body and legs with strong, grounded lines as she firmly plants her feet on the ground, representing a strong body. Opposite, her arms and upper body are portrayed with a softer, more diffused quality, expressing a relaxed status. Her head is slightly tilted up to the sky, showcasing the unique spirit of humanity. I yearn for freedom. I hope to project this passion into this artwork, where the main character stands in front of a waterfall, enjoying the cleansing embrace of water and the earth.



### The melody of a fragmented psyche

79.5 x 59.5 cm (Approx. 32 x 24 in)  
Oil on Canvas  
2015  
Meevi Choi

**M**eevi was swept away by the sad violin music which inspired her to create art reflective of this emotion. This artwork depicts a calm woman sitting, her inner world overflowing with deep and indescribable emotions. Meevi employs expressive brushstrokes of black and pink across the canvas, creating a complex and abstract style that represent the rhythm in the woman's heart. The imperfect images in the abstraction mirrors the chaotic reality. However, Meevi believes that through the expressive abstract art, we can establish a profound connection with our own chaotic emotions and discover meaning amid the confusion. This painting seeks to evoking a melody of a fragmented psyche, resonating within the hearts of both the artist and the viewer.



### Flowers in the darkness

14.8 x 21 cm (Approx. 6 x 8 in)  
Acrylic on Paper  
2024  
Meevi Choi

**T**his is an original floral painting on paper. Bringing you an enchanting spiral arrangement of white and purple flowers emerges, their petals whispering secrets in the dark...



### Deer Study

28.4 x 42 cm (Approx. 11 x 16.5 in)  
Acrylic on Paper  
2019  
Meevi Choi

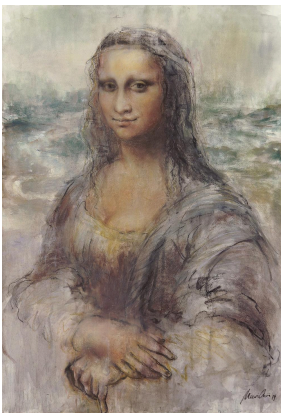
**T**his is a deer study where I've intentionally left the symbols and text blank. It's all done so that the viewers can imagine their very own impressions of the subject. Meevi love for freedom, nature, and the creatures in this magnificent world. She focuses on these critical issues, aims spark a flame within your heart to protect and cherish our environment.

## ARTWORK DESCRIPTION 9-10

### Meevi's Reinterpretation of Leonardo DaVinci Mona Lisa Painting

For centuries, the Mona Lisa has fascinated artists. People have very different opinions about this work. A critic praised "It is a beauty wrought out from within upon the flesh", while others dismissed the Mona Lisa as just a secular portrait. The painting was once stolen, making it even more famous. Not only is her mysterious smile renowned, but also the stories behind that smile from the past. All these experiences seem to have distracted from appreciating the artwork's intrinsic value itself. Thus, Meevi attempts to reinterpret it, putting her own thoughts and emotions into her creation to express her complex feelings towards this great masterpiece. She aims to reignite a pure appreciation for the work separate from the noise surrounding its legend and history. Meevi's reinterpretation breathes new life into the iconic Mona Lisa, to refocus on the artistic essence. Her innovative techniques challenge viewers to re-evaluate how we experience from art.

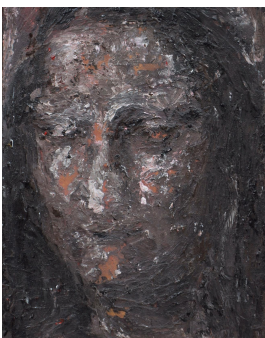
Meevi invites viewers to immerse themselves in the timeless story of the Mona Lisa artwork. She has created two artworks reinterpreting the Mona Lisa.



#### **Mona Lisa, No. 1**

58.5 x 76 cm (Approx. 23 x 30 in)  
Mixed Media on Paper  
2014  
Meevi Choi

In the artwork Mona Lisa, No.1, Meevi precisely rendered the Mona Lisa as a homage to da Vinci, using plastic paint, watercolors, pastels and charcoal, she employed overlapping techniques for a pure replication. Viewers can closely observe the subtle effects of these mixed media in this retrospective of her work.



#### **Mona Lisa, No. 2**

8 x 10 in  
Acrylic on Canvas  
2014  
Meevi Choi

In the artwork Mona Lisa, No.2, Meevi took a unique approach by thickly layering paint to sculpt the Mona Lisa's outlines, then using a special technique to wash away some paint, creating a distressed effect with the underlying flesh tones showing through. This lends a mysterious, worn metaphorically hinting at deeper emotions or objects yet undiscovered. On one hand, she hopes her unique expressive techniques changing traditional notions. On the other, Meevi views the abstract portions as projections of her personal perspective, symbolizing her sentiments towards the fleeting nature of time.